

elcometer[®]
inspection equipment



Elcometer 320
Climatic Monitoring System

Climatic Conditions

Elcometer 320

Climate Monitoring System

The Elcometer 320 is a powerful system which accurately and remotely monitors climatic parameters.

STANDARDS:
BS 7079-B4, IMO MSC.215(82),
IMO MSC.244(83), ISO 8502-4,
US Navy NSI 009-32,
US Navy PPI 63101-000

supplied with
ElcoMonitor™

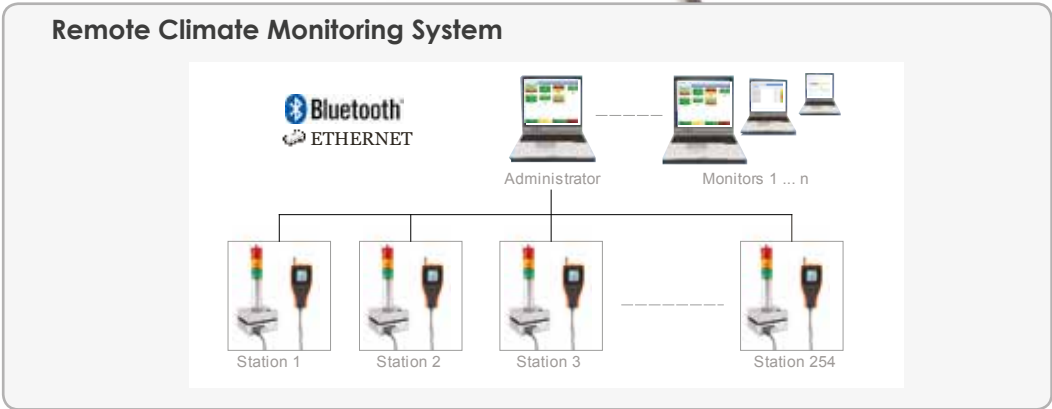
Each red, yellow, green signal tower has an integrated alarm providing both visual and audible warnings

Remotely monitor and record climatic parameters:

- Relative humidity
- Ambient air temperature
- Surface temperature
- Specific humidity
- TΔ (the difference between surface temperature and dewpoint)

The Elcometer 320 can also be used as a stand alone environmental warning station - ideal for single zone monitoring

Up to 254 monitoring stations can be set up remotely either by Bluetooth® or over an Ethernet TCP/IP connection



Elcometer 320

Climate Monitoring System

The Elcometer 319 is connected to a signal tower and alarm via an embedded PC which is connected to the control and monitoring computers via standard Ethernet TCP/IP or by Bluetooth® for remote monitoring.

Through the simple use of the internationally recognised red, yellow, green traffic light sequence, ElcoMonitor™ allows Quality Managers to see, at a glance, the environmental conditions of up to 254 locations from the comfort of their office chair.

ElcoMonitor™ software incorporates Set Up Wizards which guide the User through the initial set up of each Elcometer 320 Monitoring Station. Once a station has been assembled and switched on, ElcoMonitor™ searches for all the active monitoring stations.

Each station can be set up remotely using ElcoMonitor™ Software.

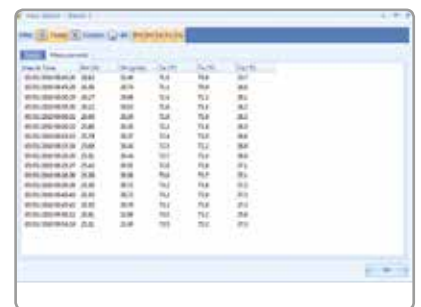
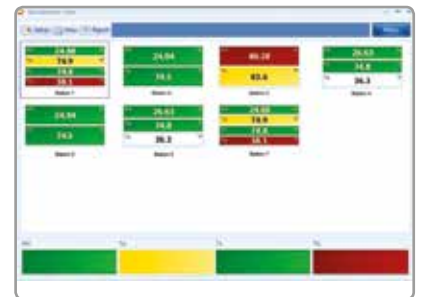
Station set ups include:

- Which two climate parameters to be used for each station
- User definable red, yellow and green warning limits
- Flashing red light additional warning parameter
- Data recording frequency
- Warning buzzer alarm duration

Username and passwords are used to ensure that only approved administrators can amend the set up of each station.

All measurement values (RH, SH, Ta, Ts, TΔ) from each station are transmitted back to ElcoMonitor™ allowing remote investigation of all the environmental conditions.

Individual reports for each monitoring station can be generated from within ElcoMonitor™ or archived in spreadsheet form for further analysis.



Technical Specification

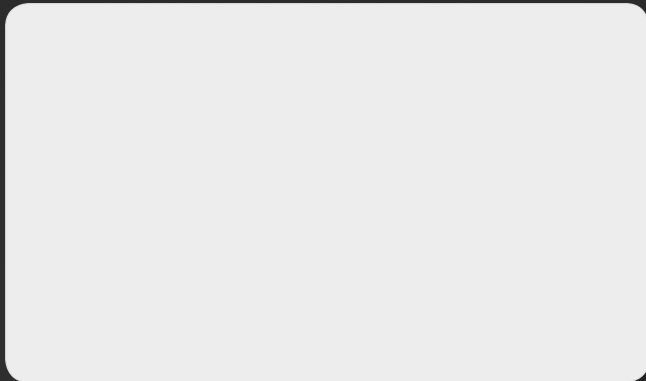


Elcometer ElcoMonitor™ Monitoring System:

Certificate

Part Number	G320-1	●
Measuring Parameters	RH, SH, Ta, Ts, TΔ	
Connectivity	Ethernet TCP/IP Network or Bluetooth® The embedded PC will automatically connect to a wired TCP/IP network with DHCP, which will allocate it an IP address	
Number of Stations	Maximum of 254 individual Elcometer 320 stations can be connected	
Embedded PC	eBox 3300-JSK with 2 x RS232 connections - or equivalent	
Central PC Requirements	Minimum Requirement of Windows XP with 1 GB RAM and 1GB free HD; 1024 x 768 Screen Resolution; Connection to the same Ethernet TCP/IP network as monitoring stations - preferably on the same subnet; Bluetooth® connections can be made via an integrated or USB Bluetooth®	
Packing List	Elcometer 319 Top Dewpoint Meter with calibration certificate, Light and audible alarm system with power supply, Elcometer 320 Climate Monitoring System Base Unit and power supply, Flash Card, Connection cables, ElcoMonitor™ Log and ElcoMonitor™ View Software, Bluetooth® USB dongle	

● Certificate supplied as standard.



elcometer[®]
www.elcometer.com

ENGLAND

Elcometer Limited
Manchester M43 6BU
Tel: +44 (0)161 371 6000
Fax: +44 (0)161 371 6010
sales@elcometer.com

BELGIUM

Elcometer SA
B-4681 Hermalle /s Argenteau
Tel: +32 (0)4 379 96 10
Fax: +32 (0)4 374 06 03
be_info@elcometer.com

FRANCE

Elcometer Sarl
45430 La Chapelle-Saint-Mesmin
Tel: +33 (0)2 38 86 33 44
Fax: +33 (0)2 38 91 37 66
fr_info@elcometer.com

GERMANY

Elcometer Instruments GmbH
D-73431 Aalen
Tel: +49(0)7361 52806 0
Fax: +49(0)7361 52806 77
de_info@elcometer.de

THE NETHERLANDS

Elcometer NL
Euclideslaan 251
3584 BV Utrecht
Tel: +31 (0)30 259 1818
Fax: +31 (0)30 210 6666
nl_info@elcometer.com

JAPAN

Elcometer KK
Saint Paul Building,
6F, 5-14-11, Higashiiooi,
Shinagawa-ku, Tokyo 140-0011
Tel: +81-(0)3-6869-0770
Fax: +81-(0)3-6433-1220
jp_info@elcometer.com

REPUBLIC OF SINGAPORE

Elcometer (Asia) Pte Ltd
Singapore 589472,
Tel: +65 6462 2822
Fax: +65 6462 2860
asia@elcometer.com

USA

MICHIGAN
Elcometer Inc
Rochester Hills Michigan 48309
Tel: +1 248 650 0500
Toll Free: 800 521 0635
Fax: +1 248 650 0501
inc@elcometer.com

TEXAS

Elcometer of Houston
1146 Sheffield, Unit D,
Houston, TX 77015
Tel: +1 713 450 0631
Toll Free: 800 521 0635
Fax: +1 713 450 0632
inc@elcometer.com